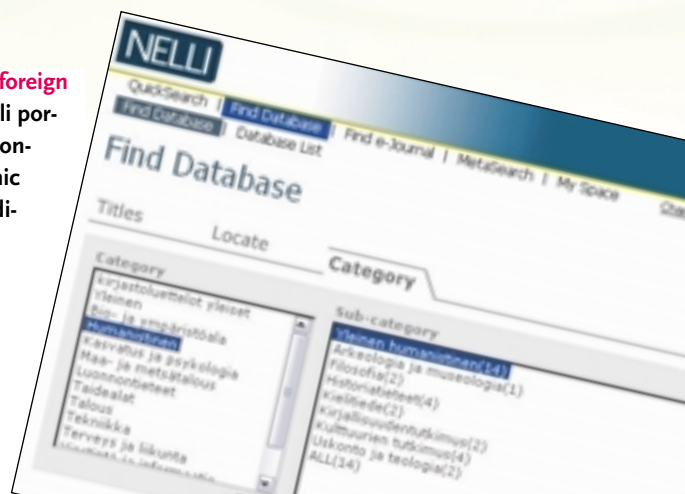


CHOOSE

the world's best Finnish and foreign electronic resources. The Nelli portal is a service package that contains all the libraries' electronic data resources. Online periodicals, books, reference books, library catalogues, reference databases and local online resources are easy to find through Nelli.



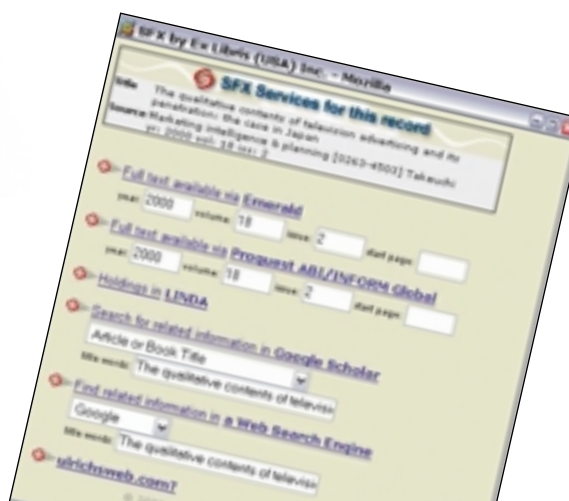
RETRIEVE

precise results from several databases simultaneously — with ease. The Nelli portal offers you rapid cross-searches of resources you have chosen yourself or resource groups and domains organised for you by the librarian. You can edit your searches, save the results and send them on by e-mail.



FIND

a new way of using the library with link services. With the SFX link service, which is part of the portal, searches do not have to terminate at references; you can go on from there to a whole series of additional services. With just one click you can access full texts, information on availability and Internet services (such as book sales). Efficient maintenance of search and link services ensures that the material is always available and up to date.



CUSTOMISE

the journals and databases you use most. Authenticated users can save their favourite resources and create their own resource groups (databases, reference books, etc.). You can save your searches and references under 'eShelf' in your 'My Space' domain and use scheduled alerts to keep track of updates.



WHAT IS NELLI?

NELLI is the national information retrieval portal. It is one of the information retrieval and management projects coordinated by the National Library. All university, polytechnic and public libraries are going to be NELLI users. The portal project is being funded by the Ministry of Education. The National Library is coordinating the launch of the portal and will be responsible for maintaining it in conjunction with the libraries themselves.

NELLI can be accessed by anyone, anywhere, anytime using any Internet connection, by entering the address www.nelliportal.fi. The Internet workstations at universities, polytechnics and public libraries can be used to access all the electronic resources acquired for all these educational institutions, from library catalogues to full-text electronic journals. Some resources (including several complete library catalogues) are open to all and their use is not restricted in any way; they can be used outside the university network and the libraries. By using a user name and password to logon to the portal from outside your institution, all the allowed resources can be accessed remotely. Reading licensed full-text documents calls for you to be authenticated and authorised by the Proxy server, however; more detailed information about authentication, the proxy server and how to use them can be obtained from the staff at your library. Training in how to use NELLI will be given by the staff at your library.

www.nelliportal.fi

The one-stop shop for library information



MAKE FRIENDS WITH NELLI — THE NATIONAL INFORMATION RETRIEVAL PORTAL



Helsinki University Library, the National Library of Finland P.O.Box 26 (Teollisuuskatu 23-25) FIN-00014 University of Helsinki FINLAND | <http://www.lib.helsinki.fi/fnehb/> | 2005